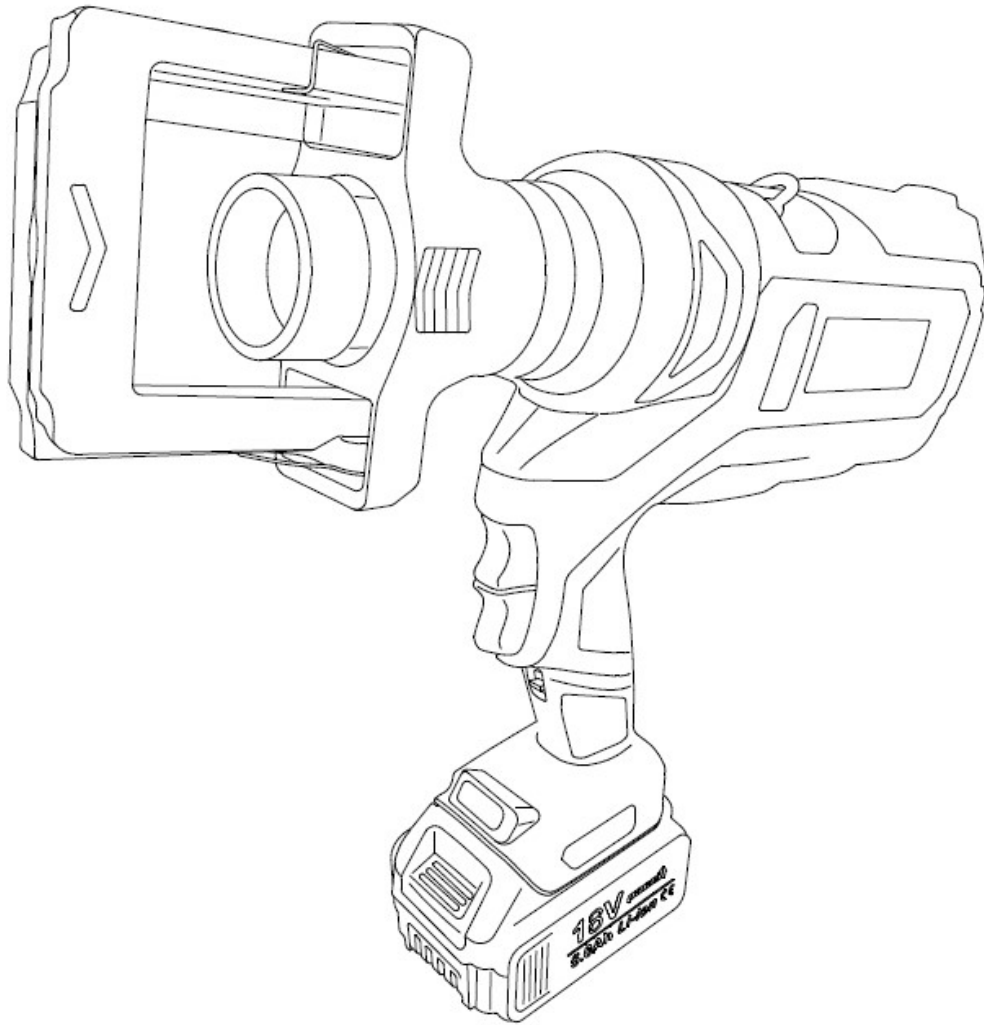




INTRODUCTION MANUAL

Model BPP116C/55003



CE



Thank you for purchasing the Pace1 Press tool.

More information on the Pace1 products can be found on our website

www.pace1tools.com

Pace1 Tools Ltd.

Teollisuustie 12 B
FI-06150 Porvoo
FINLAND

www.pace1tools.com | info@pace1tools.com



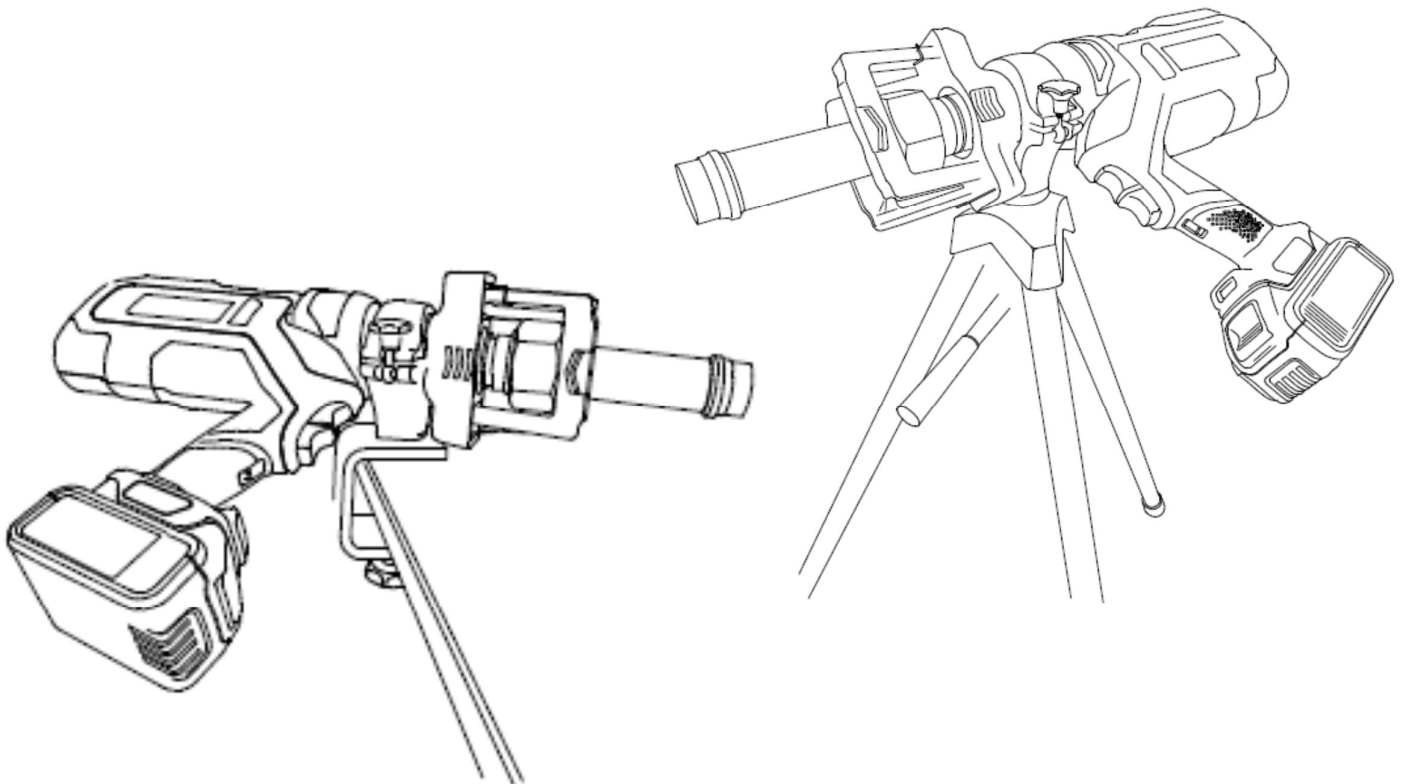
Sales package should include:

PACE1PRESS pre-assembling machine
18 V 5,0 Ah Li-ion battery (2 included)
Battery charger
Heavy Duty case
Lubricant oil spray

Options: Sockets as needed, table stand, tripod stands

Technical specification:

Battery operated
Voltage 18 V
Battery capacity 5.0 Ah Li-ion
Weight > 7 kg
Pipe diameter min \varnothing 6 mm
max \varnothing 42 mm





QUICK GUIDE

1. Switching on/off

Switch on the machine as follows;
Unlock the locking button ③
Press Push button ② and the machine is ready to operate
Switch off;
The machine switch off automatically after 5 minutes

2. Choose the right parts

Choose the nut, cutting ring and socket to match the pipe. Notice differences between L- and S- types!

3. Setting the working pressure

Pressure can be adjusted left side the body of the machine. Pressure values can be find on the chart that follows and the chart is also attached on the machine. As different couplings and materials require different working pressure, please check the function of the cutting ring after every installation and make sure it is installed correctly.

Display LED features:

Green flash:

a) Good grimping, pressure reach the preset threshold (1-18).
The motor stop automatically.

Red flash:

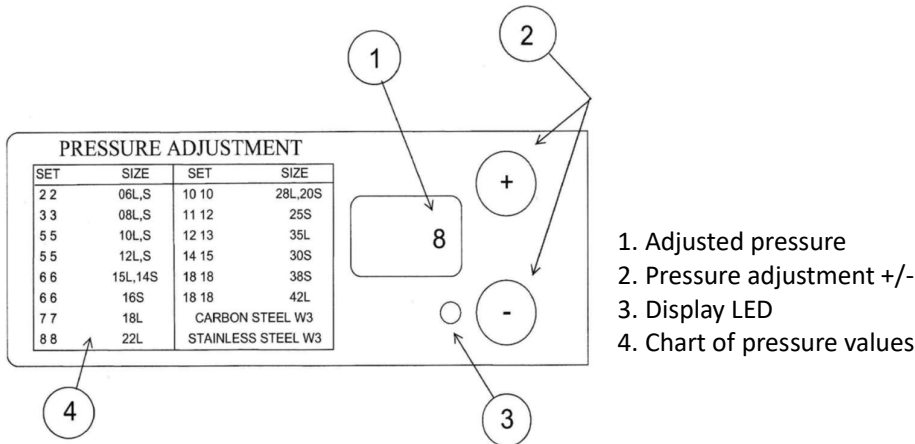
a) Pressure is not reach, start a new cycle without release totally the pressure. Press firmly the release trigger to bring back the piston and release the pressure inside the tool.
b) Battery are too low, verify the level on the battery itself.

Orange:

a) Reached 14500 cycles (maintenance require soon)

Red:

a) Maintenance threshold reached (set at 15 000 cycles) send tool to service center



1. Adjusted pressure
2. Pressure adjustment +/-
3. Display LED
4. Chart of pressure values

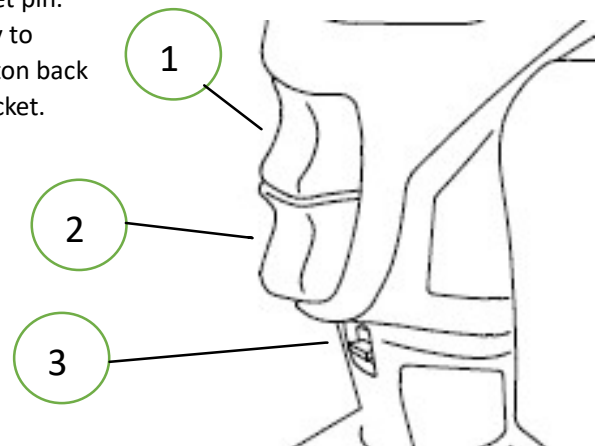
4. Press adjustment chart

| PACE1PRESS PRESS ADJUSTMENT | | | |
|-----------------------------|----------|------------------------|----------|
| SET | SIZE | SET | SIZE |
| 2 2 | 06L, 06S | 10 10 | 28L, 20S |
| 3 3 | 08L, 08S | 11 12 | 25S |
| 5 5 | 10L, 10S | 12 13 | 35L |
| 5 5 | 12L, 12S | 14 15 | 30S |
| 6 6 | 15L, 14S | 18 18 | 38S |
| 6 6 | 16S | 18 18 | 42L |
| 7 7 | 18L | CARBON STEEL | ● |
| 8 8 | 22L | STAINLESS STEEL | ● |

5. Socket change

Adjust pressure to minimum. Squeeze the push button ② until the groove on the piston is visible. Detach the battery from the machine as measure of precaution. Detach the socket pin and the socket from the machine. Place new socket on the end of piston and fasten it with the socket pin. Make sure that the socket is properly attached. Attach the battery to the machine and by pressing the release button ① return the piston back to starting position. Apply oil spray on the inner surface of the socket.

- ① Release button
- ② Push button
- ③ Locking button



6. Pipe installation

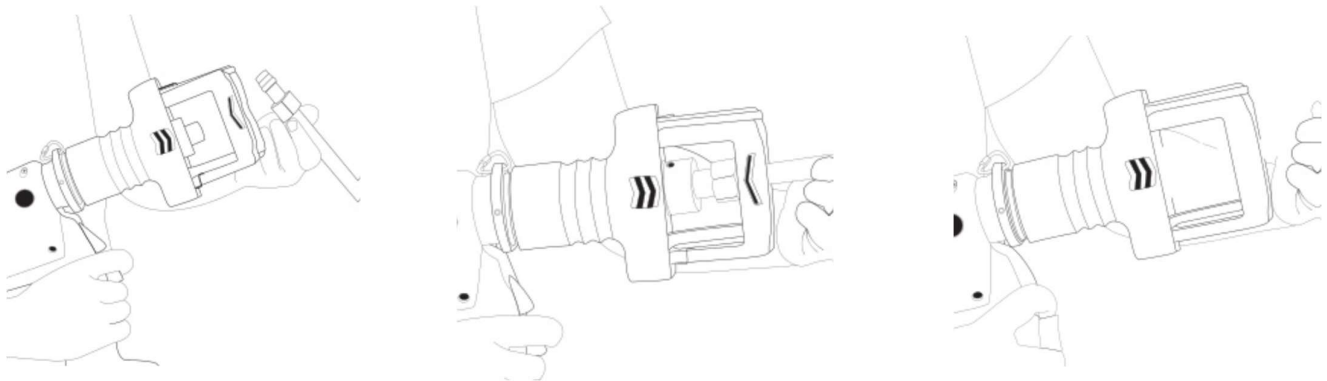
Place the nut and the cutting ring on the pipe.

Place the pipe firmly against the socket so that the nut and the cutting ring are between the socket and the clamps. Make sure that the pipe is straight in the middle of the clamps and in the right angle. Make sure that no fingers or anything irrelevant is between clamps and socket.



7. Pre-assembly

Make sure that nothing irrelevant is between clamps and socket. Pre-assembly is done by holding the machine firmly with other hand and holding the pipe from outside the clamps with the other hand and pulling it against the socket. Squeeze push button (2) until the automatic release happens. Release the push button (2). Press release button (3) and return the piston back to starting position. Open clamps and take the pipe away.



8. Checking the pre-assembly

Check that pre-assembly is done correctly, right amount of pressure was applied and that the cutting ring attached to the pipe in the right way. If the pre-assembly is not good enough, pipe must be cut and new pre-assembly has to be made. Adjust the working pressure again if needed.

Never use the machine if you notice any functional or mechanical problems. The manufacturer is not responsible of any damage caused by faulty machine.

In problem situations contact your dealer.



GENERAL POWER TOOL SAFETY WARNINGS



WARNING! Read all safety warnings and all instructions. Failure to follow the warnings and instructions may result in electric shock, fire and/or serious injury.

Save all warnings and instructions for future reference.

- 1) Work area safety
 - a) Keep work area clean and well lit. Cluttered or dark areas invite accidents.
 - b) Do not operate power tools in explosive atmospheres, such as in the presence of flammable liquids, gases or dust. Power tools create sparks which may ignite the dust or fumes.
 - c) Keep children and bystanders away while operating a power tool. Distractions can cause you to lose control.
- 2) Electric safety
 - a) Avoid body contact with earthed or grounded surfaces, such as pipes, radiators, ranges and refrigerators. There is an increased risk of electric shock if your body is earthed or grounded.
 - b) Do not expose power tools to rain or wet conditions. Water entering a power tool will increase the risk of electric shock.
 - c) Use power tools only with specifically designated battery packs. Use of any other battery packs may create a risk on injury and fire.
 - d) Recharge only with the charger specified by the manufacturer. A charger that is suitable for one type of battery pack may create a risk of fire when used with another battery pack.
 - e) When battery pack is not in use, keep it away from other metal objects, like paper clips, coins, keys, nails, screws or other small metal objects, that can make a connection from one terminal to another. Shorting the battery terminals together may cause burns or a fire.
 - f) Under abusive conditions, liquid may be ejected from the battery; avoid contact. If contact accidentally occurs, flush with water. If liquid contacts eyes, additionally seek medical help. Liquid ejected from the battery may cause irritation or burns.
- 3) Personal safety
 - a) Stay alert, watch what you are doing and use common sense when operating a power tool. Do not use a power tool while you are tired or under the influence of drugs, alcohol or medication. A moment of inattention while operating power tools may result in serious personal injury.
 - b) Use personal protective equipment. Always wear eye protection. Protective equipment such as dust mask, non-skid safety shoes, hard hat, or hearing protection used for appropriate conditions will reduce personal injuries.
 - c) Prevent unintentional starting. Ensure the switch is in the off- position before connecting to power source and/or battery pack, picking up or carrying the tool.



Carrying the power tools with your finger on the switch or energizing power tools that have the switch on invites accidents.

- d) Remove any adjusting key or wrench before turning the power tool on. A wrench or a key left attached to a rotating part of the power tool may result in personal injury.
 - e) Do not overreach. Keep proper footing and balance at all times. This enables better control of the power tool in unexpected situations.
 - f) Dress properly. Do not wear loose clothing, jewellery or long hair can be caught in moving parts.
- 4) Power tool use and care
- a) Do not force the power tool. Use the correct power tool for you application. The correct power tool will do the job better and safer at the rate for which it was designed.
 - b) Do not use the power tool if the switch does not turn it on and off. Any power tool that cannot be controlled with the switch is dangerous and must be repaired.

SAVE THESE INTRUCTIONS

This manual contains important safety and operating instructions for Pace1 Press.

- c) Disconnect the plug from the power source and/or the battery pack from the power tool before making any adjustment, changing accessories or storing power tools. Such preventive safety measures reduce the risk of starting the power tool accidentally.
 - d) Store idle power tools out of the reach of children and do not allow persons unfamiliar with the power tool or these instructions to operate the power tool. Power tools are dangerous in the hands of untrained users.
 - e) Maintain power tools. Check for misalignment or binding of moving parts, breakage of parts and any other condition that may affect the power tool's operation. If damaged, have the power tool repaired before use. Many accidents are caused by poorly maintained power tools.
 - f) Use the power tool, accessories and tool bitc etc. in accordance with these instructions, taking into account the working conditions and the work to be performed. Use of the power tool for operations different from those intended could result in a hazardous situation.
- 5) Service
- a) Have your power tool serviced by a qualified repair person using only identical replacement parts. This will ensure that the safety of the power tool is maintained.



General Power Tool Safety Warnings:



WARNING Read all safety warnings and all instructions. Failure to follow the warnings and instructions may result in electric shock, fire and/or serious injury. Save all warnings and instructions for further reference.

Disposal:

Do not dispose of electric tools together with household waste material!
In observance of European Directive 2002/96/EC on waste electrical and electronic equipment and its implementation in accordance with national law, electric tools that have reached the end of their life must be collected separately and returned to an environmentally compatible recycling facility.

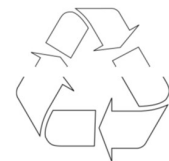


Battery:

The tool is supplied with unloaded batteries. Before using, load batteries by using the charger supplied with the tool. Before a prolonged stocking, recharge battery.



WARNING Never short-circuit the connectors of a battery.
The battery pack contains dangerous products. Recycling of Ni-ION rechargeable batteries must be made in conformity with dispositions defined in the European regulation 91/157/CEE. Please, return your used battery to any authorized distributor or to an existing collection station to ensure its recycling.
Ni-ION



Charger:

See battery charger instruction manual.



Always follow safety precautions in your work!



CE-DECLARATION OF CONFORMITY

We declare under our sole responsibility that this product is in conformity with the relevant Union harmonization legislation:
2006/42/EC, 2014/35/EC, 2014/30/EC and 2011/65/EC

References to the relevant harmonized standards used or references to the other technical specifications in relation to which conformity is declared:

Machinery:

**EN ISO 15744 (12:2008), EN ISO 3744 (02:2012), EN ISO 11201 (12:2010)
EN ISO 20643 (09:2008), EN ISO 5349-1 (04:2002), EN ISO 12096 (09:1997)**

LVD:

EN 60335-2:2012, EN 6335-2-7:2010

EMC:

EN 55014-2 (07:2015), EN 61000-4-2:2009, EN 61000-4-3 (09:2006)/A1(04:2008)/A2(01:2011)

RoHS:

EN IEC 63000 (12:2018)



Jukka Jokinen 10.08.2023

CEO



PACE1 Tools Ltd

Teollisuustie 12 B
FI-06150 Porvoo
FINLAND
tel: +358 207 871 730
www.pace1tools.com
info@pace1tools.com